

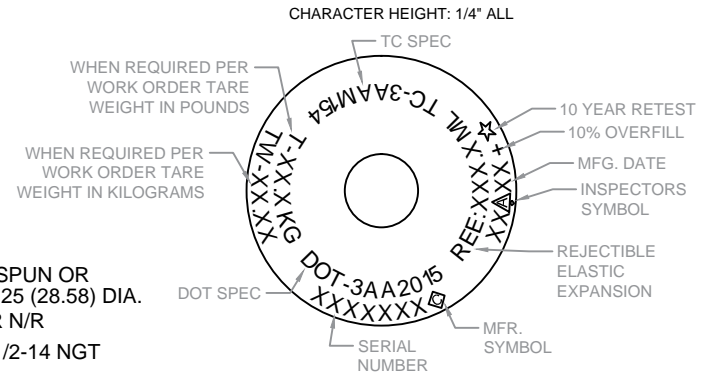
SPECIFICATION	DOT-3AA	TC-3AAM
WEIGHT	11.25 LBS NOM	5.10 Kg NOM
VOLUME	287 CU IN NOM	4.70 L NOM
SERVICE PRESSURE	2,015 PSIG	154 BARS
TEST PRESSURE	3,360 PSIG	23.16 MPa

- MATERIAL: A519 4130
- INTERNAL CLEANING: ALKALINE-STEAM-NITROGEN PURGE
- EXTERNAL FINISH: SHOTBLAST
PAINT PER WORK ORDER
- PACKAGING: PLUG INLET WITH 1/2" NPT PLUG
CARTON WITH DIVIDERS

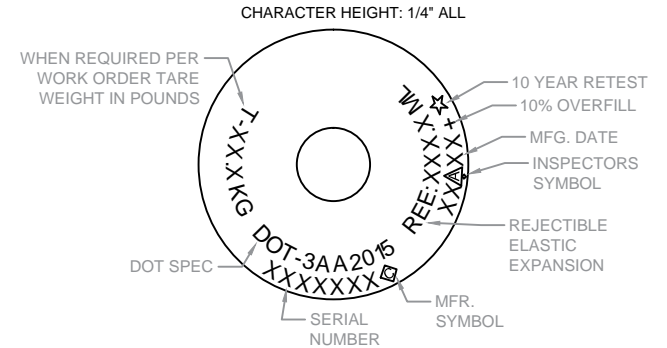
NOTES:

1. NECKRING - IF SPECIFIED ON WORK ORDER, 3 1/8-11 NS CAP THREAD X 1 1/8 BORE X 1 5/8 HEIGH, UNEMBOSSED NECKRING
2. CAP - IF SPECIFIED ON WORK ORDER, 3 1/8-11 NS THREAD

DOT/TC STAMPING LAYOUT



DOT STAMPING LAYOUT



STAMPING NOTES:

1. WHEN A NECKRING IS SPECIFIED CHARACTER HEIGHT IS 3/16" AND SINGLE LINE STAMPING IS REQUIRED.

**CONFIDENTIAL
DO NOT DUPLICATE**

**NON-CONTROLLED DOCUMENT
QA/PC DEPARTMENT
REFERENCE ONLY**

8	REV BOTTOM DEPTH, ADD MIN WALL	DLH	5/13/15
REV	DESCRIPTION	BY	DATE
		HUNTSVILLE FACILITY 521 GREEN COVE ROAD HUNTSVILLE, AL 35803 USA	
		DRAWN MEDICAL E CYLINDER	
DRWN: D. HARRIS	TOLERANCES (EXCEPT NOTED)	DATE 1/26/96	DRAWING NUMBER 3740425-00
APPD: <i>DLH</i> 5/13/15	UNITS INCHES (mm)	SCALE NONE	
APPD: <i>JW</i> 5/13/15			