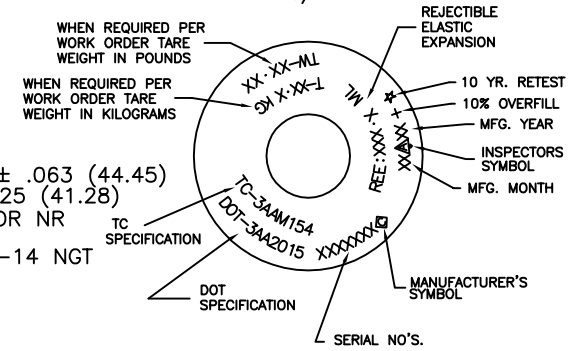


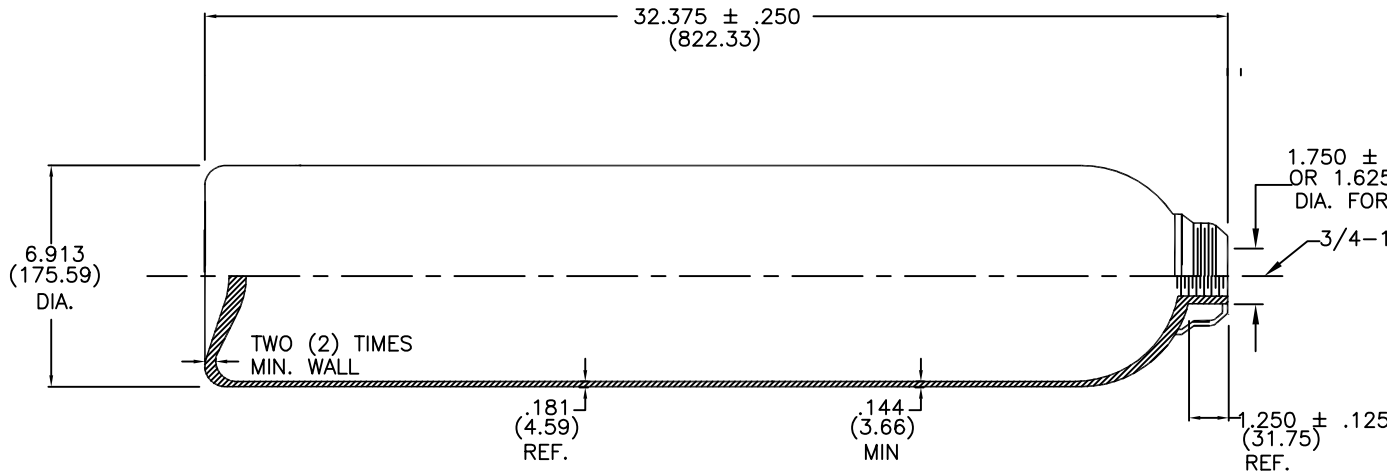
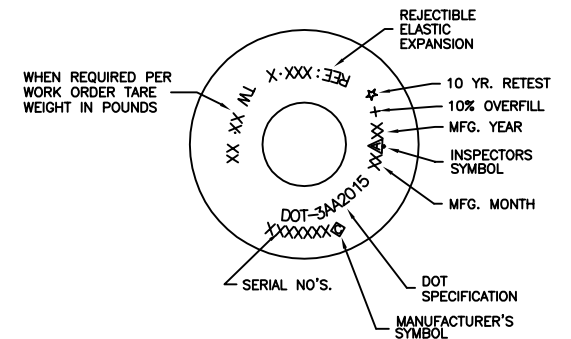
DOT/TC STAMPING LAYOUT (NOT TO SCALE)

CHARACTER HEIGHT:
5/16"



DOT STAMPING LAYOUT (NOT TO SCALE)

CHARACTER HEIGHT:
5/16"



SPECIFICATION	DOT3AA	TC3AAM
WEIGHT	46.0 LBS NOM	20.8 Kg NOM
VOLUME	995 CU IN NOM	16.31 L NOM
SERVICE PRESSURE	2,015 PSIG	154 BARS
TEST PRESSURE	3,360 PSIG	23.16 MPa

- MATERIAL: A519 4130
- INTERNAL CLEANING: ALKALINE-STEAM-NITROGEN PURGE
- EXTERNAL FINISH: SHOTBLAST
PAINT PER WORK ORDER
- PACKAGING: PLUG INLET WITH 3/4" NPT PLUG (5743)
RUBBER BAND / PALLETIZE / STRETCH WRAP

NOTES:

1. NECKRING - IF SPECIFIED ON WORK ORDER, 3 1/8-11 NS CAP THREAD X 1 5/8 BORE X 1 7/8 HEIGH, UNEMBOSSED NECKRING PART NUMBER, (4004).
2. CAP - IF SPECIFIED ON WORK ORDER, 3 1/8-11 NS THREAD PART NUMBER, (820-0001F).

**CONFIDENTIAL
DO NOT DUPLICATE**

**NON-CONTROLLED DOCUMENT
QA/PC DEPARTMENT
REFERENCE ONLY**

1	REV. LOGO	DLH	10/18/10
REV	DESCRIPTION	BY	DATE
UNITS INCHES (mm)		HUNTSVILLE FACILITY 521 GREEN COVE ROAD HUNTSVILLE, AL 35803 USA	
TOLERANCES (EXCEPT NOTED)			
DRWN. D. HARRIS	DECIMAL ± .01	TITLE	80 FT ³ BILLET PIERCED
CHKD. 10/18/10	ANGULAR ± 1 DEG	DATE	DRAWING NUMBER
APPD. 10/18/10	NONE	11/9/09	3740732-00
SCALE			