

**CONFIDENTIAL  
DO NOT DUPLICATE**

**NON-CONTROLLED DOCUMENT  
QA/PC DEPARTMENT  
REFERENCE ONLY**

SPECIFICATION	DOT-3AA	TC-3AAM
WEIGHT	7.9 LBS NOM	3.58 Kg NOM
VOLUME	176 CU IN NOM	2.88 L NOM
SERVICE PRESSURE	2,015 PSIG	154 BARS
TEST PRESSURE	3,360 PSIG	23.16 MP <sub>a</sub>

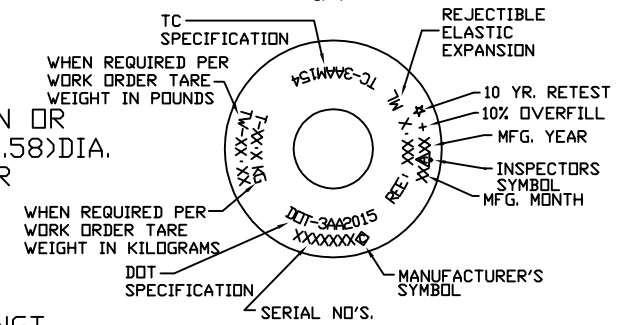
- MATERIAL: A519 4130
- INTERNAL CLEANING: ALKALINE-STEAM-NITROGEN PURGE
- EXTERNAL FINISH: SHOTBLAST  
PAINT PER WORK ORDER
- PACKAGING: PLUG INLET WITH 1/2" NPT PLUG (5713)  
CARTON WITH DIVIDERS (5015)

NOTES:

1. NECKRING - IF SPECIFIED ON WORK ORDER, 3 1/8-11 NS CAP THREAD X 1 1/8 BORE X 1 5/8 HIGH, UNEMBOSSED NECKRING PART NUMBER, (4002).
2. CAP - IF SPECIFIED ON WORK ORDER, 3 1/8-11 NS THREAD PART NUMBER, (820-0001F).

DOT/TC STAMPING LAYOUT

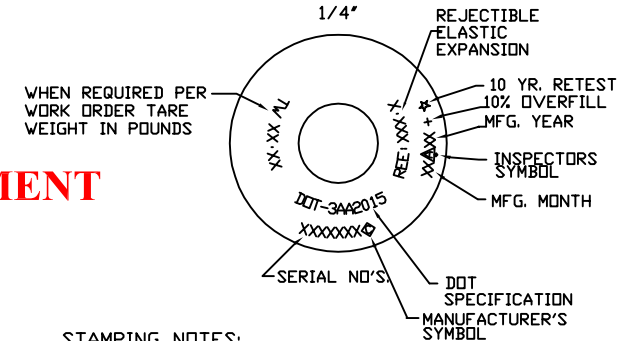
(NOT TO SCALE)  
CHARACTER HEIGHT:  
1/4"



AS SPUN OR  
1.125 (28.58) DIA.  
FOR N/R

DOT STAMPING LAYOUT

(NOT TO SCALE)  
CHARACTER HEIGHT:  
1/4"



STAMPING NOTES:

1. WHEN A NECKRING IS SPECIFIED CHARACTER HEIGHT IS 3/16" AND SINGLE LINE STAMPING IS REQUIRED.

11	REV. LOGO	DLH	6/28/10
REV	DESCRIPTION	BY	DATE
UNITS INCHES (mm)		HUNTSVILLE FACILITY 521 GREEN COVE ROAD HUNTSVILLE, AL 35803 USA	
TOLERANCES (EXCEPT NOTED)		TITLE	DRAWING NUMBER
DECIMAL ± .01	DRAWN	DRAWN MEDICAL D CYLINDER	
ANGULAR ± 1 DEG	DATE	1/18/96	
SCALE NONE	APPD.	3740416-00	