

**CONFIDENTIAL  
DO NOT DUPLICATE**

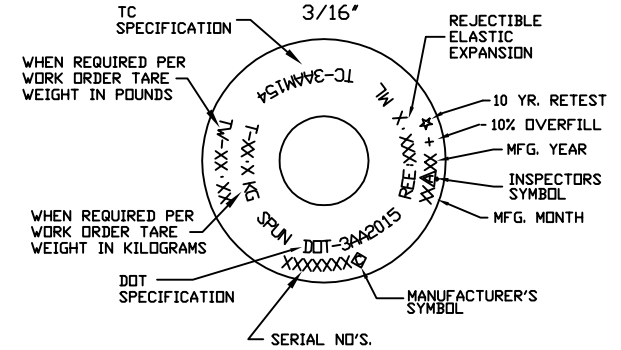
**NON-CONTROLLED DOCUMENT  
QA/PC DEPARTMENT  
REFERENCE ONLY**

SPECIFICATION	DOT-3AA	TC-3AAM
WEIGHT	4.4 LBS NDM	1.99 KG NDM
VOLUME	88 CU IN NDM	1.44 L NDM
SERVICE PRESSURE	2,015 PSIG	154 BARS
TEST PRESSURE	3,360 PSIG	23.16 MPa

- MATERIAL: A519 4130
- INTERNAL CLEANING: ALKALINE-STEAM-NITROGEN PURGE
- EXTERNAL FINISH: SHOTBLAST  
PAINT PER WORK ORDER
- PACKAGING: PLUG INLET WITH 1/2" NPT PLASTIC PLUG, (5708)  
CARTON WITH DIVIDERS, (5019)

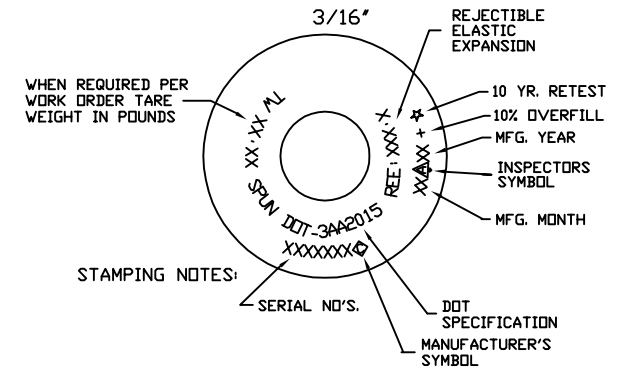
**DOT/TC STAMPING LAYOUT**

(NOT TO SCALE)  
CHARACTER HEIGHT:



**DOT STAMPING LAYOUT**

(NOT TO SCALE)  
CHARACTER HEIGHT:



1. WHEN A NECKRING IS SPECIFIED SINGLE LINE STAMPING IS REQUIRED.

8	REV. LOGO	DLH	7/23/10
REV	DESCRIPTION	BY	DATE
UNITS INCHES		HUNTSVILLE FACILITY 521 GREEN COVE ROAD HUNTSVILLE, AL 35803 USA	
TOLERANCES (EXCEPT NOTED)		TITLE	SPUN MEDICAL B CYLINDER
CHKD. <i>D.H.</i> 7/23/10	DECIMAL ± .01	DATE	3/11/96
APPD. <i>JW</i> 7/23/10	ANGULAR ± 1 DEG	DRAWING NUMBER	2740313-00
SCALE 1 : 3			