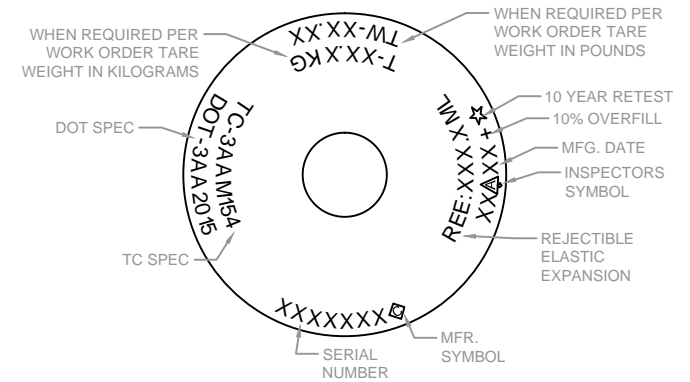


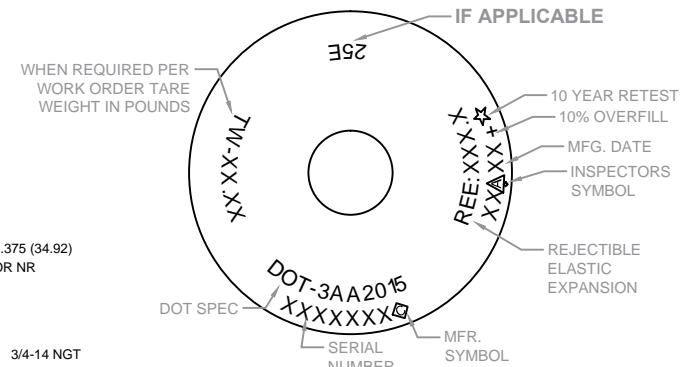
# DOT/TC STAMPING LAYOUT

CHARACTER HEIGHT: 1/4" ALL



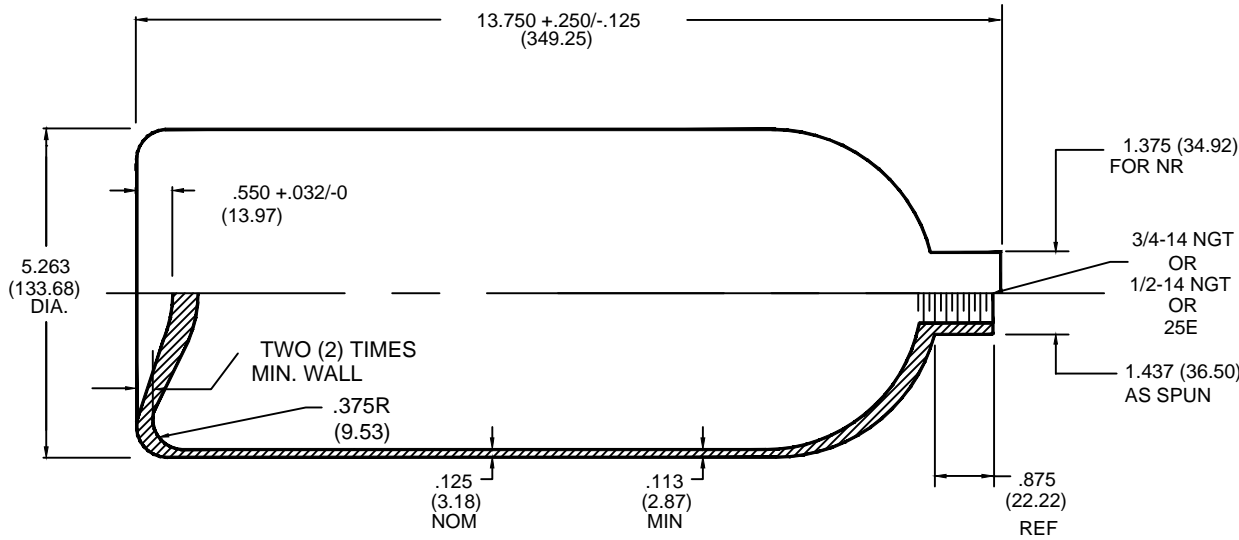
# DOT STAMPING LAYOUT

CHARACTER HEIGHT: 1/4" ALL



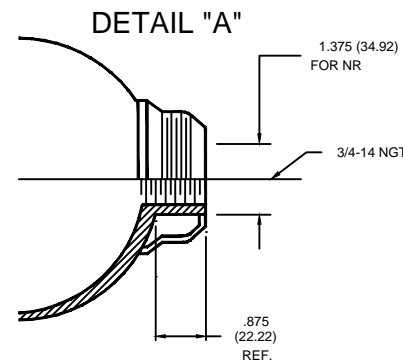
**CONFIDENTIAL  
DO NOT DUPLICATE**

**NON-CONTROLLED DOCUMENT  
QA/PC DEPARTMENT  
REFERENCE ONLY**



SPECIFICATION	DOT3AA	TC3AAM
WEIGHT	10.5 LBS NOM	4.76 Kg NOM
VOLUME	220 CU IN NOM	3.61 L NOM
SERVICE PRESSURE	2,015 PSIG	154 BARS
TEST PRESSURE	3,360 PSIG	23.16 MPa

- MATERIAL: 4130
- INTERNAL CLEANING: ALKALINE-STEAM-NITROGEN PURGE
- EXTERNAL FINISH: SHOTBLAST  
PAINT PER WORK ORDER
- PACKAGING: PLUG INLET WITH 3/4" OR, 1/2" PLASTIC NPT PLUG  
CARTON WITH DIVIDERS



**NOTES:**

1. NECKRING - IF SPECIFIED ON WORK ORDER, 3 1/8-11 NS CAP THREAD X 1 3/8 BORE X 1 5/8 HEIGH, UNEMBOSSED NECKRING (SEE DETAIL "A")
2. CAP - IF SPECIFIED ON WORK ORDER, 3 1/8-11 NS THREAD.

**3. IF 25E THREAD, DOT MARKINGS ONLY.**

17	ADD 25E OPTION & NOTE 3	DLH	6/16/16
REV	DESCRIPTION	BY	DATE
		HUNTSVILLE FACILITY 521 GREEN COVE ROAD HUNTSVILLE, AL 35803 USA	
		20 CU.FT. DRAWN CYLINDER	
DRWN: D. HARRIS	TOLERANCES (EXCEPT NOTED)	DATE	DRAWING NUMBER
APPD: DLH 6/16/16		12/7/95	3740513-00
APPD: JW 6/16/16	UNITS INCHES (mm)		
SCALE: NONE			