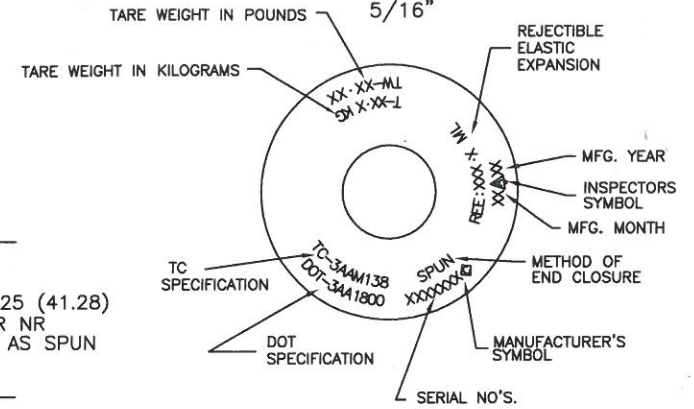


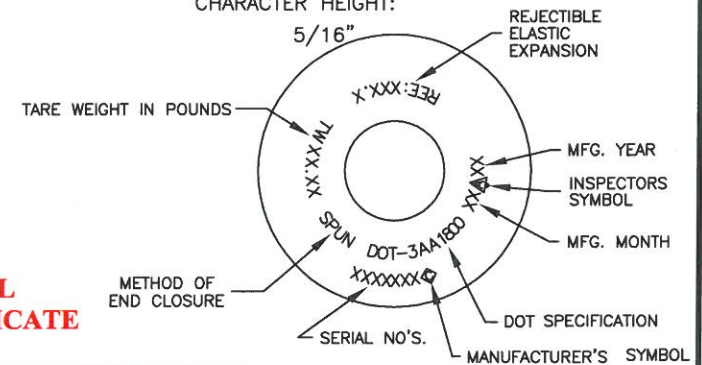
**DOT/TC STAMPING LAYOUT**

(NOT TO SCALE)  
CHARACTER HEIGHT:  
5/16"



**DOT STAMPING LAYOUT**

(NOT TO SCALE)  
CHARACTER HEIGHT:  
5/16"



SPECIFICATION	DOT-3AA	TC-3AAM
WEIGHT	27 LBS NOM	12.2 KG NOM
VOLUME	500 CU IN NOM	8.1 L NOM
SERVICE PRESSURE	1,800 PSIG	138 BAR
TEST PRESSURE	3,000 PSIG	20.68 MPA

- MATERIAL: A519 4130
- INTERNAL CLEANING: ALKALINE-STEAM-NITROGEN PURGE
- EXTERNAL FINISH: SHOTBLAST  
PAINT PER WORK ORDER
- PACKAGING: PLUG INLET WITH 3/4" NPT PLUG (5743)  
RUBBER BAND / PALLETIZE / STRETCH WRAP

**NOTES:**

1. NECKRING - IF SPECIFIED ON WORK ORDER, 3 1/8-11 NS CAP THREAD X 1 5/8 BORE X 1 7/8 HEIGH, UNEMBOSSED NECKRING PART NUMBER, (4004).
2. CAP - IF SPECIFIED ON WORK ORDER, 3 1/8-11 NS THREAD PART NUMBER, (820-0001F).

**CONFIDENTIAL  
DO NOT DUPLICATE**

**NON-CONTROLLED DOCUMENT  
QA/PC DEPARTMENT  
REFERENCE ONLY**

1	ADD TC FORMAT	DLH	1/6/11
REV	DESCRIPTION	BY	DATE
UNITS INCHES (mm)		HUNTSVILLE FACILITY 521 GREEN COVE ROAD HUNTSVILLE, AL 35893 USA	
TOLERANCES (EXCEPT NOTED)		TITLE 10 LB CO2 SPUN (BILLET TUBE) CYLINDER	
CHD: <i>D.H.</i> 1/6/11	DECIMAL ± .01	DATE 11/3/10	DRAWING NUMBER 2740718-55
APPD: <i>J.W.</i> 1/6/11	ANGULAR ± 1 DEG	SCALE NONE	